

DAILY RESEARCH, 27 JULI 2020

PT PROFINDO SEKURITAS INDONESIA

**GD PERMATA KUNINGAN LT 19
JL KUNINGAN MULIA KAV 9C GUNTUR SETIABUDI JAKARTA SELATAN 12980**

TELP +62 21 8378 0888

EMAIL : CUSTOMERSERVICE@PROFINDO.COM

WWW.PROFINDO.COM | PROCLICK.PROFINDO.COM

MARKET MOVERS



Bursa saham DOW ditutup melemah dimana investor masih menantikan Stimulus baru The Fed terkait pemulihan ekonomi dan perkembangan ketegangan Politik AS China pasca China membalas memerintahkan AS untuk menutup Konsulat nya di Chengdu. **DOW -0.68%, S&P -0.62%, NASDAQ -0.94%**

Bursa saham Eropa ditutup melemah akibat ketegangan Politik AS China setelah China membalas untuk menutup Konsulat AS di Chengdu. **Indeks DAX -2.02%, FTSE -1.41%, CAC -1.54%**

Bursa Saham Asia dibuka variatif seiring ketegangan Politik US China dan investor menantikan rencana Stimulus Pemerintah AS untuk pemulihan Ekonomi. **Hang Seng 2.21%, KOSPI +0.91%, Nikkei -0.83%**

Harga minyak mentah dunia melemah dipicu ketegangan politik AS China pasca ditutupnya Konsulat China di Houston. Harga emas ditutup menguat setelah meningkatnya tensi ketegangan AS China membuat kekhawatiran akan perlambatan ekonomi Global membuat emas menjadi buruan investor untuk mengamankan nilai Aset mereka. **WTI +0.02%, Brent Oil -0.07%, Gold +0.87%.**

IHSG pada perdagangan hari ini diperkirakan akan **BEARISH** dengan Range pergerakan **5020-5162** dengan saham-saham yang dapat diperhatikan : **SOCI SMBR TPIA FREN GJTL MARK**

MARET DATA

AMERIKA

DOW 30	26,469.89	-182.44	-0.68%
S&P 500	3,215.63	-20.03	-0.62%
NASDAQ	10,363.18	-98.24	-0.94%

EUROPE

DAX	12,838.06	-265.33	-2.02%
FTSE 100	6,123.82	-87.62	-1.41%
CAC 40	4,956.43	-77.33	-1.54%

ASIA

SHANGHAI	3,196.57	-0.20	-0.01%
HANGSENG	24,705.33	-557.67	-2.21%
SET	1,340.92	-18.73	-1.38%
KOSPI	2,220.40	+19.96	+0.91%
JCI	5,082.99	-62.02	-1.21%
NIKKEI	22,563.00	-188.61	-0.83%
ASX	6,031.00	+7.00	+0.12%

COMMODITIES

GOLD	1,914.05	+16.55	+0.87%
WTI OIL	41.30	+0.01	+0.02%
BRENT OIL	43.75	-0.03	-0.07%
COAL	62.65	-0.30	-0.48%
PALM OIL	2800	+55	+2.00%
TINS	17,645.00	+40.00	+0.23%
NICKEL	13,722.50	+100.00	+0.73%

EVENT & ECONOMIC CALENDER

ECONOMIC CALENDER :

INDONESIA

270720 MOTORBIKE SALES YoY (JUN)
LOAN GROWTH YoY (JUN)

GLOBAL

270720 HONG KONG TRADE BALANCE (JUN)
CHINA INDUSTRIAL PROFIT YoY (JUN)
JAPAN ALL INDUSTRY ACTIVITY INDEX MoM (MAY)

290720 US API CRUDE OIL STOCK CHANGE
KOREA CONSUMER CONFIDENCE (JUL)
AUSTRALIA INFLATION RATE YoY (Q2)
GERMANY IMPORT PRICE MoM (JUN)
FRANCE CONSUMER CONFIDENCE (JUL)

300720 HONG KONG GDP RATE YoY (Q2)
FED INTEREST RATE DECISION
JAPAN RETAIL SALES YoY (JUN)
FRANCE PPI MoM (JUN)
GERMANY GROWTH GDP RATE YoY (Q2)
HONG KONG RETAIL SALES YoY (JUN)
EUROPE CONSUMER CONFIDENCE FINAL (JUL)
GERMANY INFLATION RATE YoY (JUL)
US GDP GROWTH RATE QoQ (Q2)
US JOBLESS CLAIMS

310720 KOREA RETAIL SALES YoY (JUN)
JAPAN INDUSTRIAL PRODUCTION YoY (JUN)
CHINA NBS PMI MANUFACTURING (JUL)
FRANCE GDP GROWTH RATE QoQ (Q2)
GERMANY RETAIL SALES MoM (JUN)
FRANCE INFLATION RATE YoY (JUL)
EUROPE GDP GROWTH RATE QoQ (Q2)
EUROPE INFLATION RATE YoY (Q2)

CORPORATE ACTION :

DEVIDEN

270720 GHON RP 20 (CUM 2707, PAYMENT 1908)
280720 AMAG RP 30 (CUM 2807, PAYMENT 0608)
290720 FISH RP 75 (CUM 2907, PAYMENT 1908)
300720 SHIP RP 16 (CUM 3007, PAYMENT 1908)

RUPS

270720 WIIM PNBS PLAS PGLI MGRO MASA MAGP IATA BCAP
280720 WEGE TRUK SRSN MSKY IPTV INTP DOID
290720 ZONE UNIC UCID TAMU MERK MDKA KRAS KEEN KAEF INCO INAF FORU
CTBN CSRA ATIC
300720 YELO TPMA SLIS PALM IFII DYAN CTRA CLEO CITA BBYB BBKA ASRM

IPO

RIGHT ISSUE

JAKARTA COMPOSITE INDEX



PREVIOUS 24 JULI 2020

CLOSING	5082.991	-1.205%
TRANSACTION	IDR 8.36 TRILLION	
FOREIGN NETT	IDR 739 BIO (SELL)	

PREDICTION 27 JULI 2020

BEARISH
RANGE 5030-5162

BLACK CROWS
STOCHASTIC : DEATHCROSS
MACD : HISTOGRAM NEGATIF DAN DEATHCROSS

TECHNICAL RECOMENDATION



SOCI – PT SOECHI LINES TBK

CLOSING 24/7/2020 RP 141 (+7.6%)

**SELL ON STRENGTH
TAKE PROFIT 155**

BREAK OUT TRIANGLE
STOCHASTIC : UPTREND
MACD : HISTOGRAM POSITIF DAN UPTREND

TECHNICAL RECOMENDATION



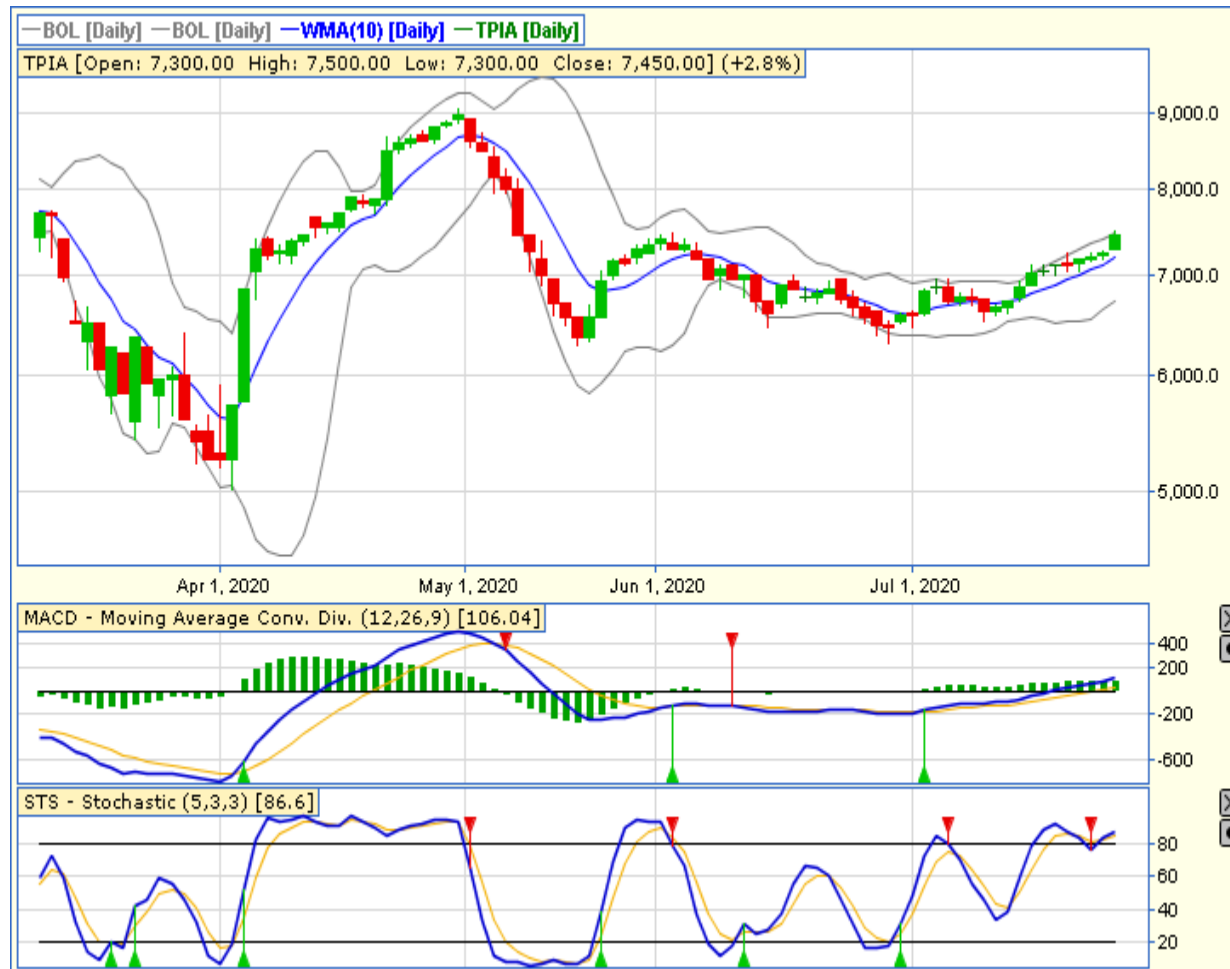
SMBR – PT SEMEN BATURAJA (PERSERO) TBK

CLOSING 24/7/2020 RP 478 (-6.3%)

**SELL ON STRENGTH
TAKE PROFIT 630**

**SHOOTING STAR
STOCHASTIC : OVERBOUGHT
MACD : HISTOGRAM POSITIF DAN UPTREND**

TECHNICAL RECOMENDATION



TPIA – PT CHANDRA ASRI PETROCHEMICAL TBK

CLOSING 24/7/2020 RP 7450 (+2.8%)

BUY

TARGET PRICE 9050

STOPLOSS < 7300

BREAK OUT RISING WEDGE

STOCHASTIC : UPTREND

MACD : HISTOGRAM POSITIF DAN UPTREND

TECHNICAL RECOMENDATION



FREN – PT SMARTFREN TELECOM TBK

CLOSING 24/7/2020 Rp 139 (+35%)

**SELL ON STRENGTH
TAKE PROFIT 169**

**BREAK OUT TRIANGLE
STOCHASTIC : UPTREND
MACD : HISTOGRAM POSITIF DAN UPTREND**

TECHNICAL RECOMENDATION



GJTL – PT GAJAH TUNGGAL TBK

CLOSING 24/7/2020 RP 515 (+23.2%)

**SELL ON STRENGTH
TAKE PROFIT 570**

**BREAK OUT TRIANGLE
STOCHASTIC : UPTREND
MACD : HISTOGRAM POSITIF DAN UPTREND**

TECHNICAL RECOMENDATION



MARK – PT MARK DYNAMICS INDONESIA TBK

CLOSING 24/7/2020 RP 890 (+14.1%)

**SELL ON STRENGTH
TAKE PROFIT 925**

**BULL FLAG
STOCHASTIC : UPTREND
MACD : HISTOGRAM POSITIF DAN GOLDEN CROSS**

RESEARCH TEAM



YULIANA

**RESEARCH ANALYST &
CORPORATE FINANCE**



DIMAS WP PRATAMA, CSA

TECHNICAL ANALYST

EQUITY CAPITAL MARKET TEAM



JESSIE JAMES

HEAD OF EQUITY SALES



PRASETYO NUGROHO

HEAD OF DEALING ROOM



GABRIELLA PRATIWY

HEAD OF ONLINE TRADING